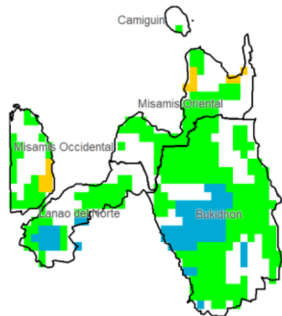
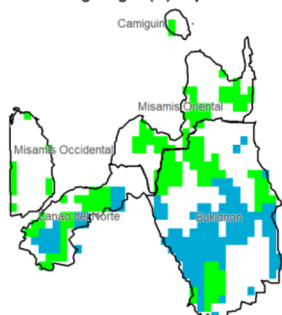


Region X (Northern Mindanao)

Water Availability for Rice
Prevailing Stage : (IV) Ripening



Water Availability for Corn
Prevailing Stage : (III) Reproductive



Provincial Values

		Mon. Ave. Rainfall (mm)	Rice CS CCI (%)	Corn CS CCI (%)
Bukidnon	280.4		I 194.3	I 349.7
			II 181.9	II 265.8
			III 176.2	III 218.9
			IV 176.2	IV 263.3
Camiguin	209.5		I 127.7	I 265.3
			II 116.6	II 194.6
			III 111.8	III 151.4
			IV 111.8	IV 192.2
Lanao del Norte	234.2		I 189.4	I 321.8
			II 179.6	II 259.5
			III 175.0	III 223.4
			IV 175.0	IV 257.6
Misamis Occidental	197.4		I 92.8	I 194.2
			II 85.1	II 149.9
			III 81.7	III 124.3
			IV 81.7	IV 148.6
Misamis Oriental	169.4		I 90.2	I 183.6
			II 81.7	II 134.7
			III 77.8	III 105.6
			IV 77.8	IV 133.3

Crop Stage (CS) highlighted in **bold** to the dominant stage during the month of October

Rice CS:
(I) Nursery
(II) Vegetative
(III) Reproductive
(IV) Ripening

Corn CS:
(I) Establishment
(II) Vegetative
(III) Reproductive
(IV) Maturity

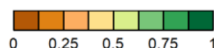
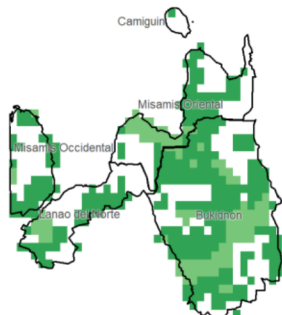
CCI Category:
Inadequate
Sufficient
Excess

Regional Summary

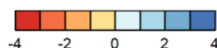
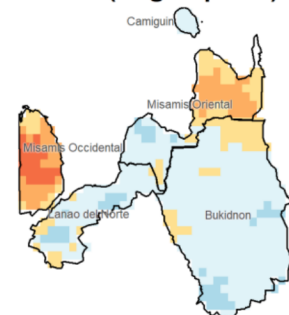
The rice crops, specially those at the prevailing ripening stage in the Northern Mindanao region, were favored with sufficient amount of rainfall. Such amount was also observed for corn crops throughout the region, except for Bukidnon and Lanao del Norte provinces where excessive amount of rainfall was observed.

The accumulated three-month rainfall was generally within near-normal condition, except for Misamis Occidental province where generally drier condition was observed as indicated in the SPEI3 map. Meanwhile, the RX1day and RX5day maximum rainfall indices provided ranges of approximately 50-100mm and 100-200mm, respectively. Majority of the vegetation was also observed to be in good condition specifically those with NDVI values greater than 0.75.

NDVI



SPEI3 (Aug-Sep-Oct)



RX1day



RX5day

